

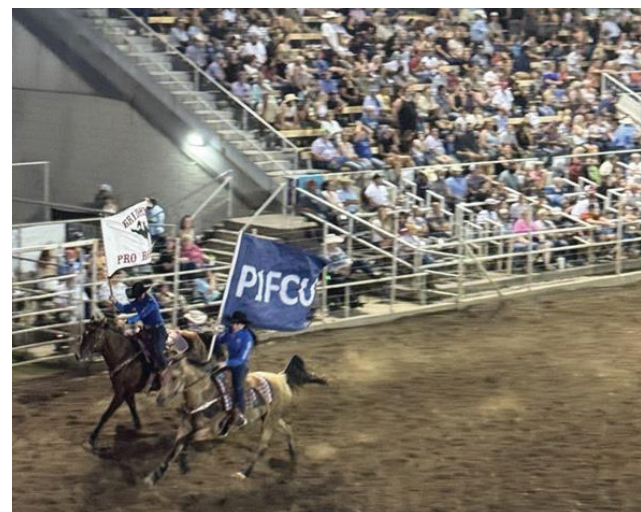


P1FCU

AUGUST 2024 | COMMUNITY DEVELOPMENT

Walla Walla Fair and Rodeo

We had a great time at this year's Walla Walla Fair and Rodeo at the P1FCU Arena! It was a busy week of activities, and our staff was on hand every day to pass out swag and prizes.



Stronger Together.

Community Commitment | August 2024

Stuff the Bus Campaign

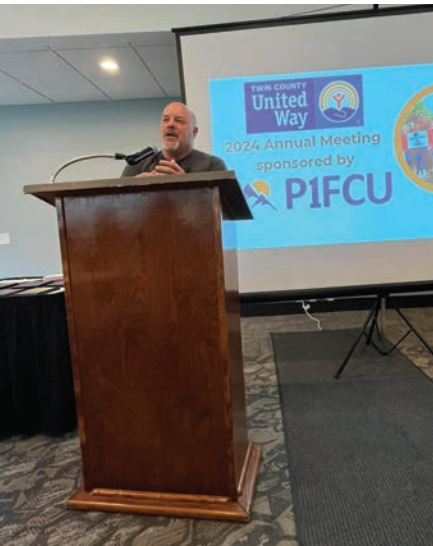
School supplies and monetary donations were accepted at all branches during July and August. We donated to schools and other local organizations to ensure students have what they need to start the school year and succeed. Thanks to generous donations from our members and staff, we were able to add to this year's campaign. In addition, the Community Development and Marketing teams helped distribute backpacks to nearly 1,000 K-12 students in the LC Valley region.





LC State Welcome Fair

We welcomed hundreds of new and returning students at the LC State Welcome Fair. Students and staff stopped by to learn about our products and services, try their luck at the golf chipping game, and have a chance to win a P1FCU Visa gift card.



Twin County United Way Annual Meeting

We were honored to sponsor Twin County United Way's annual meeting again this year. The event celebrated the achievements and impact made over the past year.

Treasure Valley Festival of the Arts

This event, which welcomes over 18,000 attendees, provides a fantastic opportunity to showcase who we are and what we offer to the Treasure Valley community.



End of Summer Celebration

The Boys and Girls Clubs of the Lewis Clark Valley's End of Summer Celebration is always one of our favorite August events to sponsor and support! We handed out P1FCU backpacks to over 400 kids who attended this year's event.



Business Member Appreciation

August's Business Member Appreciation Lunch was held at Coeur d'Alene Stump Grinding LLC in Bonners Ferry.

Lake Pend Oreille SD Welcome Back

We had a great time participating in this year's Lake Pend Oreille School District's annual Welcome Back and Benefits Fair.





LC State Dollar Auction

The LC State Men's Basketball team held its annual Dollar Auction fundraiser on August 9. Our amazing team was on hand to take care of everything money related.



New Coug Picnic and Resource Fair

Our Pullman team had a great time welcoming new WSU students to campus and sharing information on our products and services.

National Lentil Festival

This year's Lentil Fest saw thousands upon thousands of happy lentil lovers. We loved playing a part in the event by sponsoring the volunteer shirts and participating in the parade.



Idaho FoodBank Backpack Program

We volunteered at The Idaho FoodBank to build backpack bags for the children in North Idaho. This program ensures that students who are chronically hungry have access to adequate food over the weekend by providing them with a backpack full of nutritious, kid-friendly food every Friday during the school year.



Down and Dirty Mud Run

The LC Valley's annual Mud Run is a 3-mile obstacle course that invites participants to climb, carry, and crawl their way to the finish line. Proceeds benefit local charities and non-profit organizations.



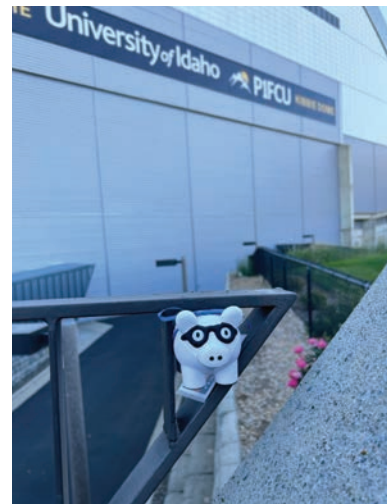
NW Infant Survival & SIDS Alliance

We were honored to sponsor, attend, and volunteer at this year's NW Infant Survival and SIDS Alliance "Night Under the Stars" gala in Coeur d'Alene. For over 60 years, NISSA has provided support to those affected by pregnancy, infant, or child loss.



UI Pig Pursuit

Our Moscow team had a great time kicking off the school year with a Pig Pursuit on the UI campus. The weeklong event awarded prizes to students and staff who found the pigs that had been hidden around campus.



Hayden Senior Center

We presented a check to the Hayden Senior Center to help support their Senior Meal Program.

Tiger Tailgate

Our Tonasket team had so much fun at the Tiger Tailgate at Tonasket Middle School and the supply drive at Tonasket Elementary.



Athol Daze

We had a blast at this year's Athol Daze! P1FCU staff participated in the parade and volunteered at the event, where they shared lots of giveaways and product information.



Boundary County Fair

Red, white, and blue, this fair's for you! We always have a great time sponsoring and being a part of the Boundary County Fair.

Family Day at The Idaho FoodBank

Our team and their family members love to volunteer and support the Idaho Foodbank and their fight against food insecurity in our communities.



Meridian Branch's Backpack Event

The Meridian branch hosted a Backpack Event in support of The Idaho Foodbank. The branch accepted monetary donations to support the Backpack program, which last year distributed over 63,000 backpacks throughout Idaho. Each backpack provides nutritious food for the weekend, including two breakfasts, two lunches, two dinners, and two snacks. Additionally, we partnered with the neighboring Albertsons to collect food for local school food pantries. The event featured games, prize drawings, a donut truck, and representatives from The Idaho Foodbank to welcome the community.



Hayden Movie in the Park

P1FCU sponsored this year's Hayden Movie in the Park, a free family fun event. Our team was on hand with games and treats before the show and shared information on our products and services with attendees.

Kindness Campaign

Our August Kindness Campaign focused on making a difference for children. We filled wish lists for the Brewster Boys and Girls Club, Family Promise of the Palouse, Friends of Walla Walla, NW Children's Home, Safe Passage, and the Nampa School District's Shoe Drive.





Building Connections to Strengthen Our Community

Attending Chamber of Commerce and other community organization meetings and events each month is an important way for us to stay connected and engaged with the communities we serve. These gatherings provide valuable opportunities to network, build relationships, and stay informed about local initiatives and challenges. By actively participating, we're able to understand the needs of our community better and identify ways our credit union can contribute and make a positive impact.



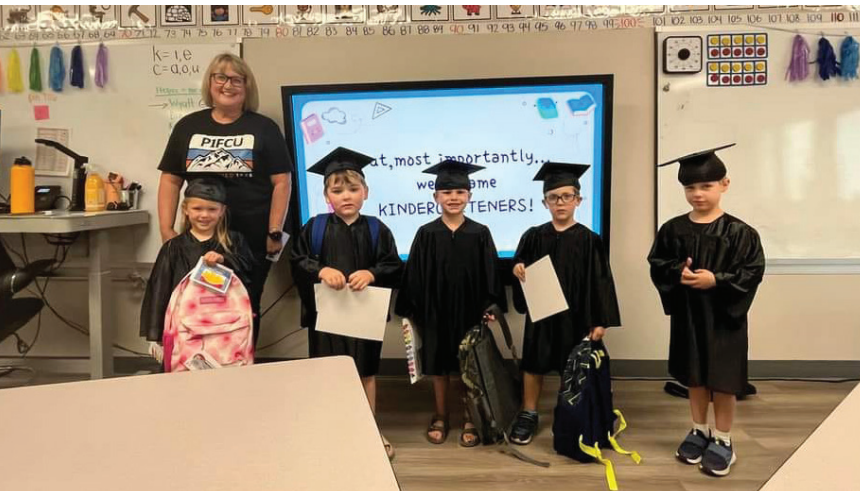
Tesh Reach for the Stars Auction

The event gathered hundreds of business partners and community members for a fun night that benefited the youth and adults in local communities. Tesh serves hundreds of individuals with intellectual and developmental disabilities each year. Their mission is to provide opportunities that allow people of all ages greater independence, self-sufficiency, and participation in their community.



TCUW Kindergarten Readiness Program

We are honored to be a part of Twin County United Way's commitment to support children from cradle to career. P1FCU has sponsored the Kindergarten Readiness Program for the past several years. This year, the five-week kindergarten program included students from Lewiston, Clarkston, Asotin, and Lapwai. Our Community Development team was on hand to congratulate the graduates of this year's program.



LC State Warrior Golf Classic

P1FCU is proud to be the official credit union of the Lewis-Clark State Warriors! We were the major sponsor of the Warrior Golf Classic at the Lewiston Golf and Country Club. Net proceeds from this event benefit student-athlete scholarships and athletic programs.

